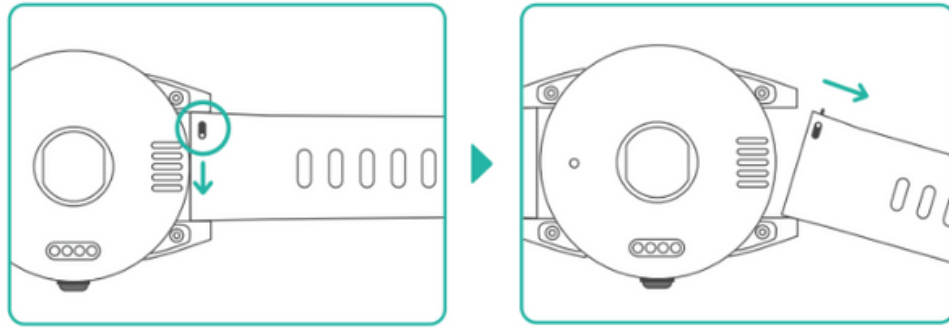
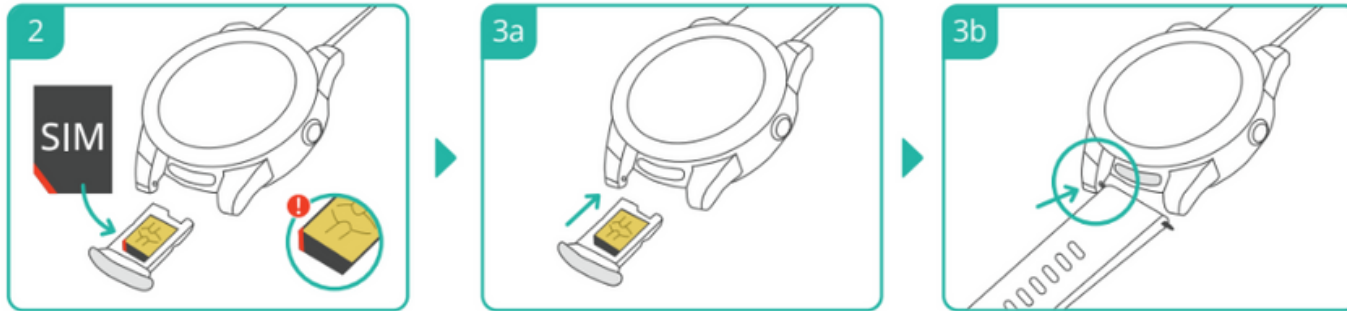


- 1** Remove strap from watch by sliding the lever to release it.



- 2** Remove SIM card holder and place new SIM in the holder. Note notch direction.

- 3 (a)** Put holder back, check that it's closed properly and **(b)** return strap to watch.



Activate your new SIM in AngelSense App: In Main Menu, click “Settings” and “General”. Select the SIM and Save. (SIM number is on the box)