

Preventing Wandering Tragedies

with

AngelSense

FOR SCHOOLS



TABLE OF CONTENTS

Preface	1
Autism Wandering, a National Safety Issue	3
Keeping Special Needs Students Safe with AngelSense	5
Preventing Wandering Tragedies	6
School Bus Safety	7
Field Trips and Community Outings	7
AngelSense Voice Features	8
Overview & Key Benefits	8
Disabling Voice Features at School	10
Optional Voice Features Disabling Agreement	11
Prevent Wandering Tragedies In Your Community	12
The AngelSense Difference	12

Preface

AngelSense is the only wandering and safety solution designed for children with special needs. Proven highly effective in preventing wandering tragedies, AngelSense proactively alerts to potential elopement situations and provides a set of tools to quickly find a child. In many incidents, AngelSense helped save lives.

AngelSense includes a GPS device for the child, wearing accessories specially designed for children with sensory sensitivity, and an app for parents, school staff, caregivers, and SAR teams. AngelSense is also used as an assistive teaching tool.

AngelSense helps schools comply with requirements to implement extra safety measures that are necessary for children with special needs. Many schools purchase AngelSense for students at risk.

AngelSense voice features are a part of its search tools. The voice features enable communicating with the child in two ways: 2-Way Voice and 1-Way Voice (both can be disabled during school hours). These capabilities are helpful in search efforts when there is no GPS reception or when the child is hiding. The guardians can speak to the child and calm them down or instruct them remotely.

2-Way Voice: Guardians initiate a phone call that is automatically picked up and opens the speakerphone to speak to the child (e.g. requesting to stop or to calm down).

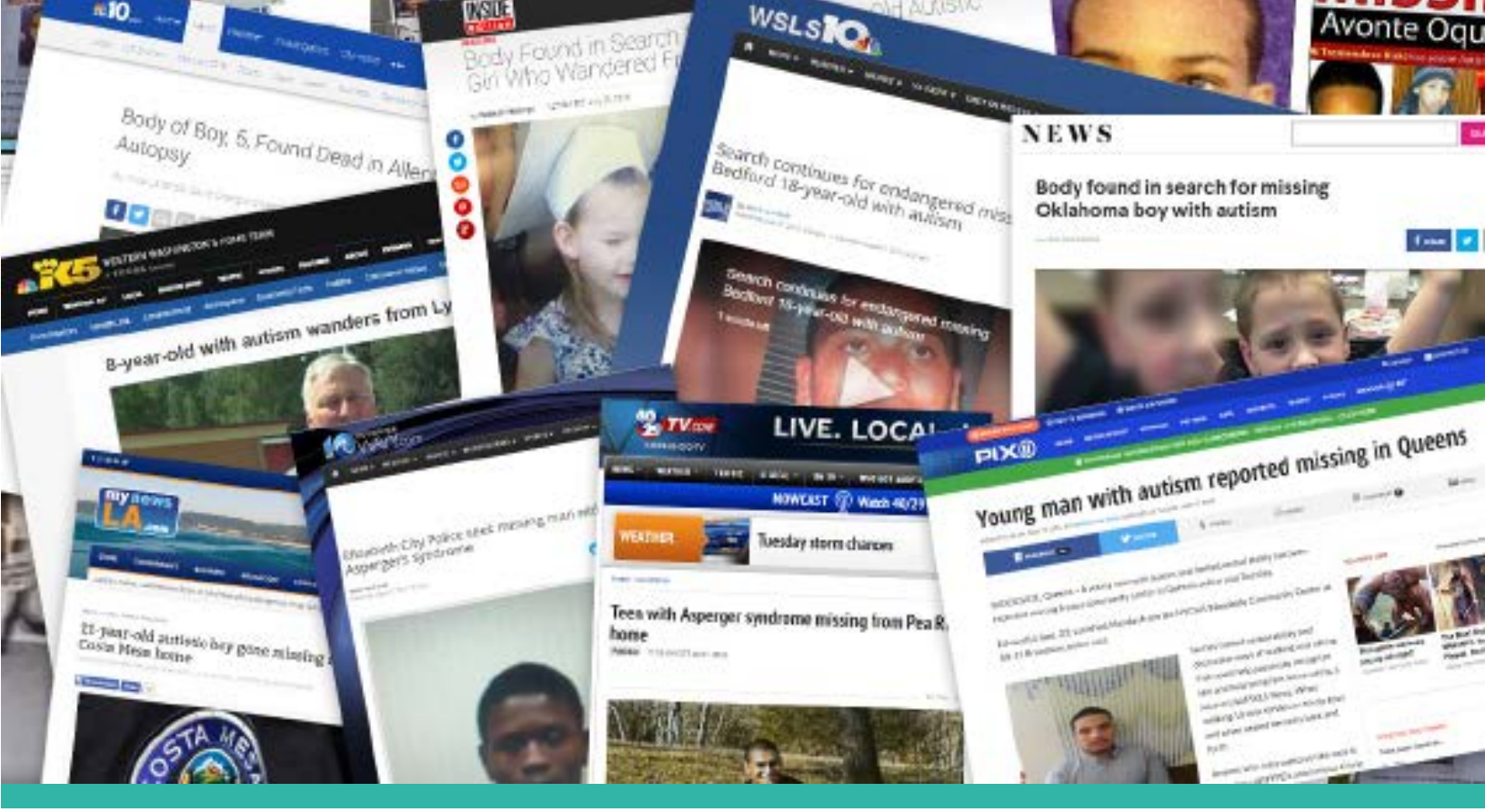
1-Way Voice: Guardians initiate a phone call that is automatically picked up without a ring that can potentially impact the child’s immediate behavior. It is designed for children that might be sensitive to sounds or vibrations.

AngelSense does not record nor does it have video, display or call-out capabilities.

The voice features can be completely disabled during school hours if necessary to comply with school regulations. It is also possible to disable 1-Way Voice only. When needed, AngelSense can also provide a written Voice Features Disabling Agreement. This agreement was reviewed and accepted by many school district attorneys. A version of the agreement is available at the end of this document.

Our dedicated customer service school liaisons will be happy to speak with school representatives, answer any questions, and provide guidance for using AngelSense at school.

If you have students that are at risk of elopement and would like to learn more about our special offer for schools, please write our school liaisons at schools@angelsense.com or call [1-646-770-2950](tel:1-646-770-2950).



Autism Wandering, a National Safety Issue

Autism wandering has been recognized as a national problem.

Recent [research](#) shows that **more than 250,000 school-aged children with autism or other developmental disorders wander away from adult supervision each year, risking their safety.** Many of these children had left their school without anyone noticing.

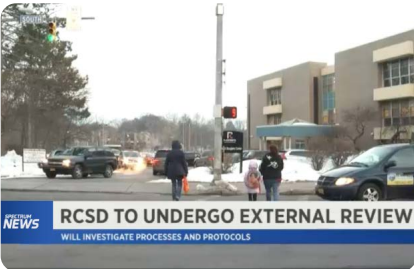
The research found that children with autism were at particular risk. “The kids who are most likely to wander are the kids who are least likely to respond appropriately to police or rescue personnel – potentially further jeopardizing their safety.” (Andrew Adesman, MD, senior investigator of the study).

Many of these incidents lead to bodily injury, mental and emotional degradation, and sometimes to a tragic ending.

A few school elopement incidents that gained media attention:



[5-Year-Old Boy with Autism Left School and Nobody Noticed](#)



[Autistic Boy Gets Off School Bus, doesn't Enter School](#)



[Avonte Oquendo Ran Out of School and Disappears](#)



Keeping Special Needs Students Safe with AngelSense

AngelSense helps schools to cope with the supervisory challenges of keeping children with special needs safe.

Schools have a great responsibility to ensure the safety of special needs students in a way that extends beyond the professional standard of care for the general student population. Responding quickly to an elopement incident can prevent serious personal injury to a student or even death. Sadly, this is at times the outcome of such incidents.

School staff members can easily access the AngelSense app on mobile, or desktop, and use valuable safety features such as:

- Text and email alerts when a child leaves school boundaries to respond immediately



“ My son is an eloper and has high functioning autism. I received a phone call from the school saying that he had disappeared on campus, and they were unable to locate him! With the alarm setting on this GPS tracker I was able to activate it 12 miles away from where he was. He was hiding on campus and school staff were able to locate him using the alarm on this device! OMG such a relief. ”

Stephanie Dorsey

- Real-time location of the child on a map
- Tools to assist during a search, including Alarm, Wi-Fi, and Voice
- Sharing the real-time location of the child via text or email with search and rescue personnel

Preventing Wandering Tragedies

The AngelSense system automatically sends text and email alerts to the parents and school staff when the child leaves school boundaries. This allows them to respond immediately, minimizing the child’s exposure to danger.

A rich set of tools is provided to quickly locate the child: GPS with real-time location when outdoors, voice capabilities, an Alarm, and Wi-Fi when indoors. The Indoor features assist in locating a child hiding in an unsafe place or to quickly find them before they leave school grounds.



“ It came in handy when in December my son who is autistic non verbal left school without anyone noticing. I was alerted as soon as he left the building and was able to pinpoint his location to his teacher. Within 15 minutes he was safely back in school. ”

LaTanya Wright

School Bus Safety

AngelSense proactively alerts if the school bus has not arrived at school. There have been several tragic incidents of special needs students being left on the bus, [eloping when getting off the bus](#), as well as being [dropped off at an incorrect location](#).



Trevyan Rowe’s death: What we know, timeline



Boys with autism dropped off at the wrong school, located with AngelSense

Schools can monitor the arrival of the school bus and know exactly when to wait for the child by using the ETA and traffic information features.

Field Trips and Community Outings

AngelSense gives staff and parents peace of mind by always knowing the location of a child with elopement behaviors or anxiety in public situations while on outings. With AngelSense, children with special needs can be safely included on field trips with their typical peers as well as participate in extracurricular activities.

In many cases, schools are now able to allow children who are at risk of wandering to participate in activities that were previously not available to them.



AngelSense Voice Features

Overview & Key Benefits

The 2-Way Voice feature allows calling the device to speak with the child without them needing to “pick up” or click anything. After a few rings, the speakerphone on the child’s device is automatically activated. This allows helping the child from afar.

A 1-Way Voice call does not ring and the speakerphone is not activated. It should be used if the ring may trigger elopement, scare or distract the child.

The Voice features are helpful in many different situations:

1. Elopement:

- a. Instruct the child to stop and wait for a caregiver
- b. Get the help of people near the child

- c. Get a sense for the child’s location indoors, where GPS is inherently limited, by hearing the sounds near the child (e.g. the sounds in the cafeteria).

For example, in [this case](#), a child got upset and bolted from school, and the mom was able to use AngelSense 2-Way Voice to guide him back to school. When the mom later picked up her child, the staff said that just hearing her voice helped him to calm down and return safely on his own.

2. **Meltdowns:** School staff, as well as the parents, can remotely calm down a child during a meltdown.
3. **Teaching:** 2-Way Voice can also be used for remote guidance as an assistive teaching tool, helping to teach the child new skills. For example: responding to voice instructions in case of elopement (“stop where you are”), provide guidance at social activities, shopping at a store, taking a bus, going to a friend’s house, etc.



“ I got this tracker for my five year old daughter. I absolutely love it. Her teacher and teacher’s aides are guardians too. They know when her bus arrives at school and when she arrives home. It’s such a relief not to worry as much. AngelSense is GOLD. ”

Tartanitia Moseley

4. **Communication:** AngelSense operates as a phone for special needs children, who are unable to use a regular phone. This increases their independence level and enhances the connection with family and caregivers.

Disabling Voice Features at School

Some schools may require disabling the voice features during school hours to comply with school regulations.

In collaboration with schools, AngelSense developed the ability to automatically disable the voice features during school hours.

School staff sets the school days and hours, as well as vacation days, in the AngelSense School Schedule (parents can set this in the app for the school).

Once the School Schedule is defined, staff receives a notification each time the voice features are enabled/disabled (start and end of the school day) as well as each time the School Schedule itself is changed. Schools across the nation are successfully using AngelSense.



“ His teacher is a school guardian and can see his location on the app during school hours. ”

Brinna Stanton

AngelSense is far less invasive than a smartphone and does not include recording, video, display or call out capabilities.

Optional Voice Features Disabling Agreement

In an effort to facilitate collaboration between families and schools, AngelSense has worked closely with school district attorneys to create an optional Voice Features Disabling Agreement. This document may be used as is or modified by the family and school as needed, to allow flexibility based on each school’s requirements including the following:

- 1. Options for disabling voice features during school hours (specifying specific school hours and calendar school days).
- 2. Ability to add school guardians including contact information.
- 3. Optional Notifications: Alerts to be sent to any school official requested when voice features are enabled/disabled, edits to the school schedule and settings, etc.

Our dedicated department of School Liaisons is happy to work with parents and schools to accommodate any specific requests.

Please contact us for further information, write schools@angelsense.com or call [1-646-770-2950](tel:1-646-770-2950).

You can Download the Disabling Agreement [here](#).

Prevent Wandering Tragedies In Your Community With AngelSense



AngelSense is the only **GPS & voice-monitoring solution designed specifically for individuals with cognitive disabilities** such as autism & Down syndrome.

AngelSense is a **proactive solution that alerts parents and school staff immediately** if the child left school boundaries, or if the child got off the school bus but didn't enter school. Alerts are sent to both School Guardians and parents.

With next-generation GPS technology, **AngelSense helps schools to implement the extra safety measures necessary** for preventing wandering incidents and keeping their special needs students safe.

The AngelSense Difference



School Dashboard

Special interface for staff to help ensure the child is safe during school hours.



Late Departure Warning

Delivers an alert if a student has not left school on time.



Live Location Tracking

See the student's location and walking or travel routes in real-time.



Alarm

Remotely activate an alarm on the device to locate a missing student.



Elopement Alert

Get an immediate alert when the student leaves school boundaries. Start searching right away.



Voice Capabilities - Optional

Personalized by family and school, allowing flexibility based on school regulations.



Customized to meet regulations



AngelSense does not record

AngelSense is committed to the **protection and privacy of the children** we serve, as well as the privacy of the children they encounter while wearing the AngelSense device throughout the day.

It is our sincere intention to **provide parents and schools a tool to safeguard children prone to elopement**, to assist teaching for independence and to facilitate communication of daily activities between schools and parents.



My son eloped from school! We knew right away and found him so quickly!!

Such a relief! My son is an eloper and has high functioning autism. I received a phone call from the school saying that he had disappeared on campus, and they were unable to locate him! With the alarm setting on his GPS tracker I was able to activate in 12 miles away from where he was. He was hiding on campus and school staff were able to locate him using the alarm on this device!"

Stephanie Lynnette Dorsey



"My autistic son eloped, AngelSense found him."

AngelSense has been a lifesaver for my family. My son who is autistic left school without anyone noticing. I was alerted as soon as he left the building and was able to pinpoint his location to his teacher. Within 15 minutes he was safely back at school."

LaTanya Wright

Our School Liaison Team are here to answer your questions about AngelSense at school.

For more information:
www.angelsense.com/school
schools@angelsense.com | 1-646-770-2950



AngelSense

www.angelsense.com